



We are dedicated to perfection in machining, engineering, and manufacturing processes, while reducing costs through innovative production methods. The end result is unmatched British quality and the development of lasting, profitable client relationships.



Address

: 12a Green Road, Eye,
Peterborough PE6 7YR



Telephone

: +44 (0) 1733 223377



Email

: Engineering@Bsd.uk.com



BSD Engineering is formed

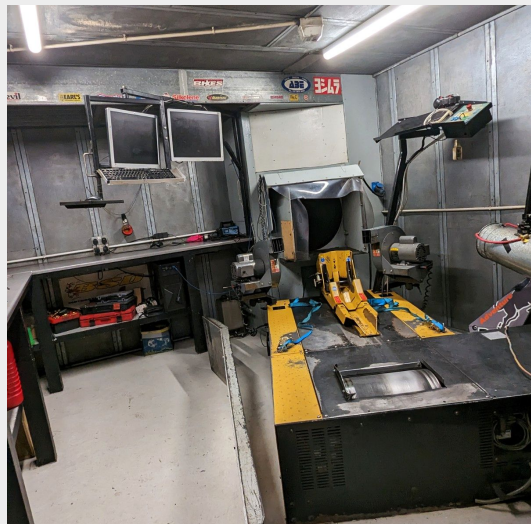
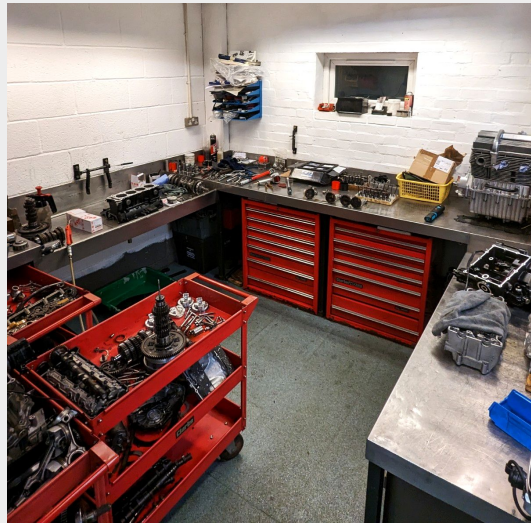
BSD Engineering was formed 25 years ago following the 1997 closure of the Peterborough division of Molins.

The Molins closure led to auctioning off most of the factory's heavy-engineering machinery. Several units were bought by the now redundant Mark Brewin to kickstart his dream of running a fully equipped motorcycle workshop, capable of servicing and rebuilding engines and chassis.

The purchased gear cutters and turning centres were then transported by tractor and trailer to recently acquired premises to house newly formed BSD Engineering.

BSD Engineering started life in old farm buildings owned by Mark's father. With the aid of former work colleagues and friends, the buildings were quickly converted into modern, fully equipped workshops to house the motorcycle and engineering departments.

In the early days, motorcycle service and race preparation became the dominant half of the business, attributable to results gained by BSD prepared motorcycles at top-level UK race series e.g. the Isle of Man TT and British Superbikes.



Racing world opened doors

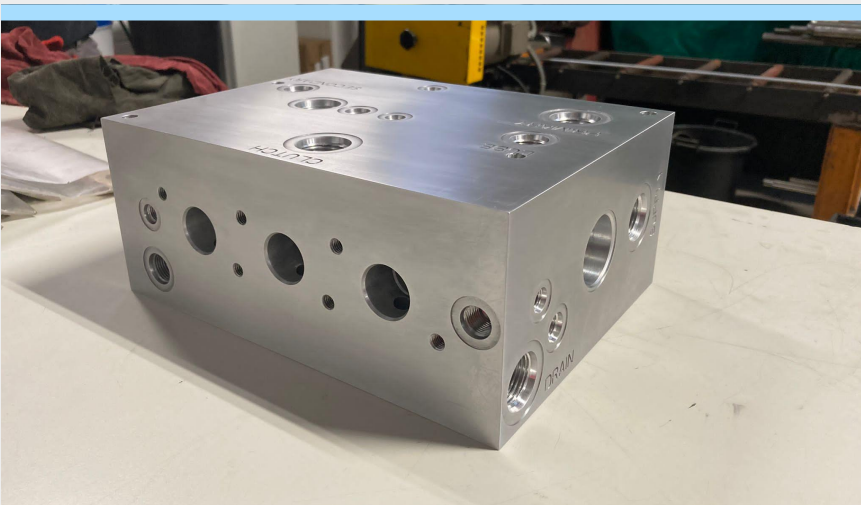
Success within the motorcycle racing world opened doors to businesses who were actively seeking independent engineering companies who could deliver quality work within a short time frame. BSD Engineering excelled at this opportunity and continues today delivering engineering work in a short time frame and to exacting standards.

BSD Engineering now employs 12 full-time, time served engineers – some of whom were retained after being taken on as apprentices following work experience courses organised by Arthur Mellows Village College; a schooling programme Mark Brewin firmly believes in because it's the same route he started his engineering career (many years ago).



Expanding client base

BSD Engineering has a broad client base and can list Baker Perkins, Siemens, PCML, Machining Work, Kerry Foods (Cambridge & Gainsborough Branches), Berry Globe (RPC), PJ Innovation , Pneumatechnique Ltd... to name but a few.



BSD Engineering has indirectly worked with Perkins Engines Company Ltd (Perkins) for 20 years.

The relationship with Perkins started with minor subcontract work such as Piston Temperature Sensors, followed by Sump Modifications and Dynamometer mods required for the engine Test Cells.

Our specialist gear machining service produced large gears for Perkins, which has led to production of other Perkins components such as Manifold Blocks [pictured left]

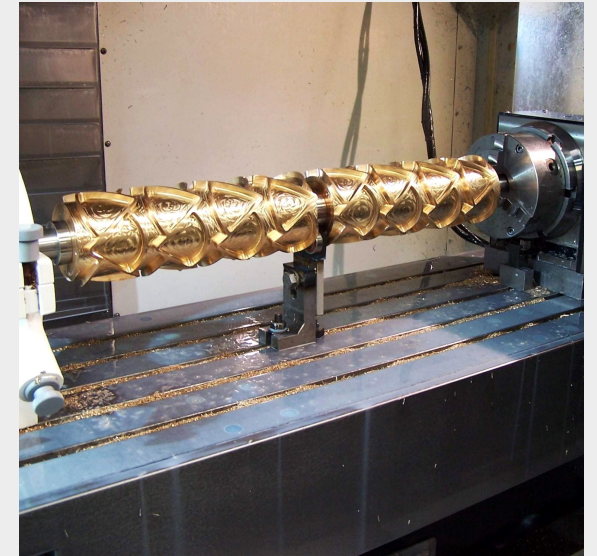
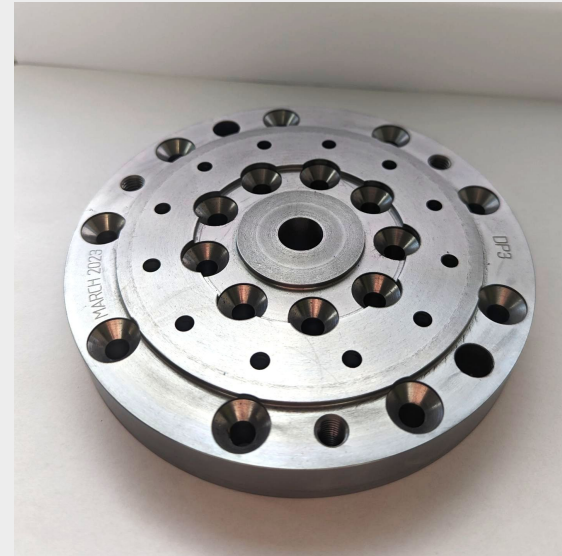
Work supplied by – and to – Perkins has been subcontract from contractors who have had long association with Perkins. But in many cases they don't have the facility (and maybe ability) to produce the required scope of work.



Between 2017-2020, £300K of Perkins work was subcontracted to BSD Engineering via Precision Equipment.

£40K achieved with Lubet Engineering, plus £4,300 of additional work via Automation Works (2020-2021).

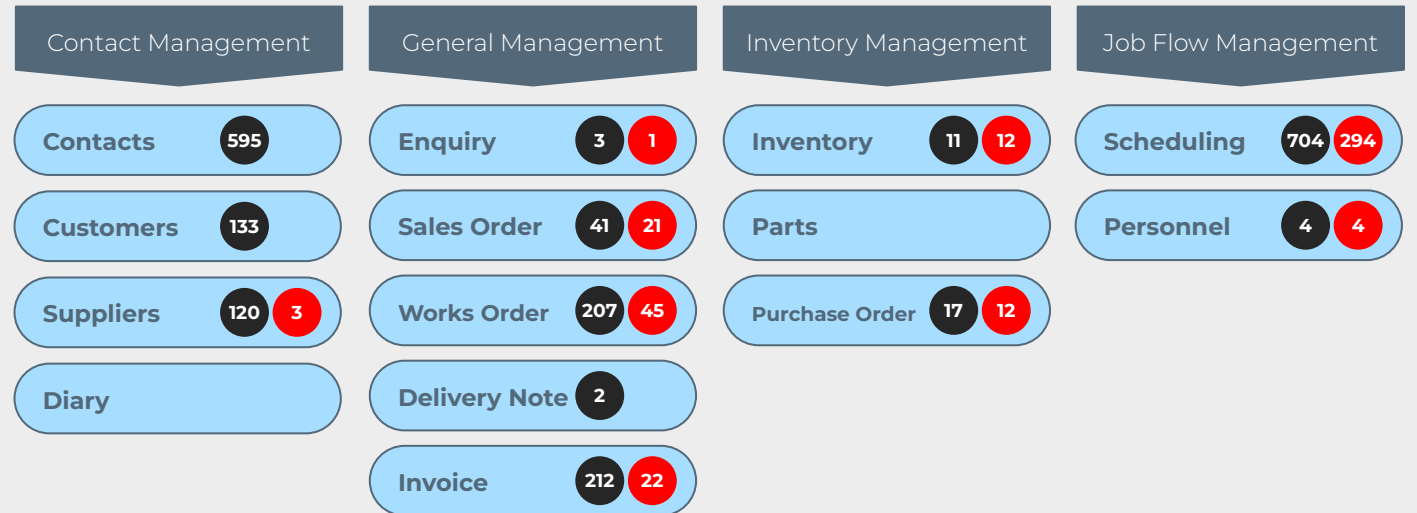
Machining Works also subcontracts Perkins work to BSD Engineering (£67,500) from 2017 to date.





Statii procedure

BSD Engineering employs Statii, a fully traceable MRP (Material Requirement Planning) management system allowing purchase order to invoice to be audited and inspected at any time, while maintaining document and client confidentiality.





CNC milling & turning

BSD Engineering uses state of the art CNC technology in all manufacturing processes to produce bespoke parts to exacting standards.

We continually invest in the latest CNC equipment. Many turned parts use a single axis. However, the machines at BSD are of multiple axis to allow more flexibility and meet the needs of its clients.

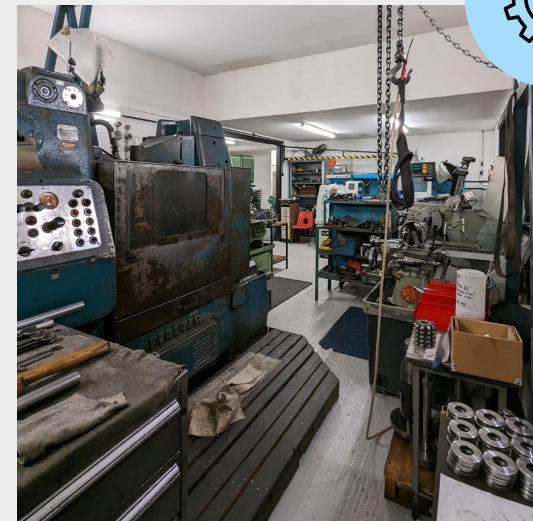
Material machining includes, but not limited to: Nitronic 60 stainless steel and steel alloys e.g. tool steels (D2), cast iron, carbon fibre, graded aluminium, brass, copper alloys, semi-synthetic and synthetic plastics... To date we have supplied finished components for many applications including medical, mechanical, food and chemical industries.





Gear cutting & Broaching

For 20 years, BSD Engineering has provided quality gear manufacturing and broaching services to areas of industry and autosport, from motorcycle and car race transmissions to industrial process machinery to large capacity mining machines, across national and international markets.





Design & Reverse Engineering

Whether working completed designs or initial design sketches, BSD Engineering can and often will advise on design functionality and tolerancing where required.

The days of staff with external micrometers and vernier calipers are not numbered – they now work harmoniously with CAD systems and 3D modelling via Fusion 360, Onshape, SolidWorks, AutoCAD, etc. Once CNC, Parasolid (.igs, .stp, sat, sldprt, stl, and vda formats) and, of course, traditional 2D drawings (.pdfs, .tif, DXF or DWG files). Basic customer supplied sketches (back of cigarette packet drawings are extremely rare today) can soon be shaped into the most detailed works document.



Reverse engineering is a speciality service but is called upon with increased frequency as businesses streamline and reduce replacement machine budgets. BSD Engineering is more than capable of producing replacement obsolete parts in a timely and cost-effective manner.



Increasing productivity

Capital expenditure of £600k in 14 months on new machining centres has increased productivity and new business where bespoke precision parts to exacting standards are required.

April 2023 saw the commissioning of our latest purchases: two multi-axis CNC milling centres – Haas VF-2 SS YT (X Axis – 762mm, Y Axis – 508mm & Z Axis - 508mm), Haas VF-4 (X Axis – 1270mm, Y Axis – 508mm & Z Axis – 635mm).

£200k investment on building extensions during 2023 to accommodate growth in the engineering side of BSD Engineering, and we are presently looking to recruit additional time-served engineers.



Haas VF-2 SS YT **New 2023**



Haas VF-4 **New 2023**



Clearer future working together!

BSD Engineering is a proven specialist engineering service. Perkins Engines Company Ltd (Perkins) is a renowned manufacturer of diesel engines covering industrial, marine and electric power provision. With both companies based in the same locale it would seem logical the two would at some point develop a working relationship. This has proved to be the case albeit via third parties.

A better working relationship could be had that would benefit both businesses. BSD Engineering, therefore, proposes working directly with Perkins by removing the need for third party contractors. The benefits would be:

Removal of third-party handling costs and profit percentage.

Increased efficiencies from...
...one-to-one interaction between BSD Engineering and Perkins development / engineering teams to minimise downtime (5-10 days avg.) resolving queries.

Rapid initial enquiry response – comes from liaising directly with BSD Engineering's experienced project management team.

Speed up in project start time by removing third party time spent sourcing the most profitable tender (read lowest bid).

Linking process systems for unhindered project tracking.



BSD Engineering – from staff to management – takes great satisfaction and pride in seeing finished components and completed projects. A connected working relationship between Perkins Engines Company Ltd and BSD Engineering would undoubtedly deliver the same sense of pride and achievement.



Address

:

12a Green Road, Eye,
Peterborough PE6 7YR



Telephone

:

+44 (0) 1733 223377



Email

:

Engineering@Bsd.uk.com

